

A NEW PUBLIC LIBRARY OPEN TO ALL NATIONAL LIBRARY OF GREECE
STATE-OF-THE-ART PERFORMANCE VENUES GREEK NATIONAL OPERA
1,830,000 SQ FEET OF VITAL GREEN SPACE STAVROS NIARCHOS PARK



STAVROS
NIARCHOS
FOUNDATION
CULTURAL
CENTER

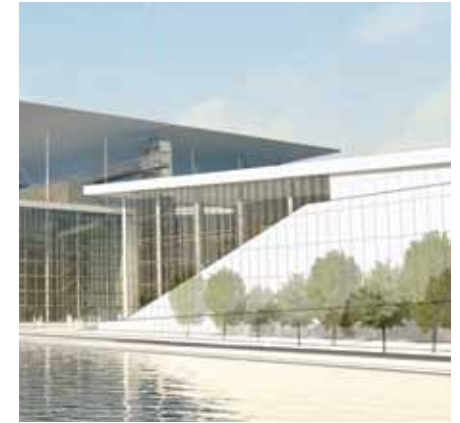
ΚΕΝΤΡΟ
ΠΟΛΙΤΙΣΜΟΥ
ΙΔΡΥΜΑ
ΣΤΑΥΡΟΣ
ΝΙΑΡΧΟΣ



THE STAVROS NIARCHOS FOUNDATION CULTURAL CENTER

A 21st Century Urban Symbol of contemporary Athens will emerge in 2015 with the completion of the Stavros Niarchos Foundation Cultural Center (SNFCC), a sustainable arts, education, and recreation complex built to enrich the everyday lives of Athenians and Greeks and attract millions of visitors from around the world. The striking ecological and architectural achievement includes the 170,000 m² (42 acre) Stavros Niarchos Park, a state-of-the-art, new building for the National Library of Greece (NLG) and a world-class opera house for the Greek National Opera (GNO).

Overlooking the Athens waterfront 4.5 km south of central Athens on the edge of Faliro Bay, the SNFCC site honors the namesake of its surrounding

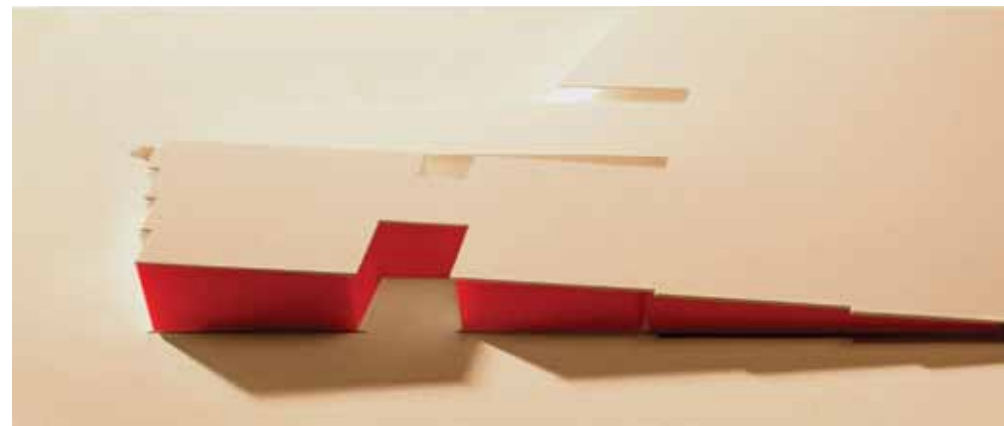


top: Building view from the Esplanade
bottom: Satellite view of project location

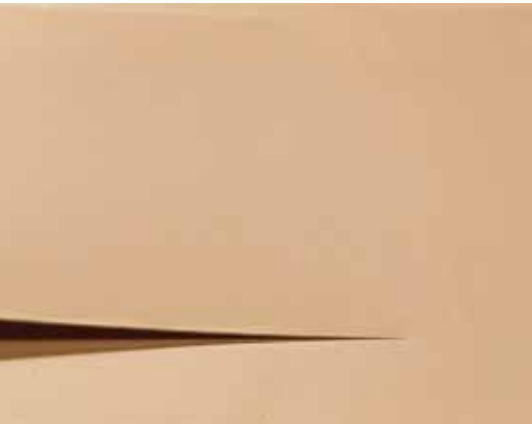
community, Kallithea (“beautiful view”), by restoring the original open views of the sea. The Stavros Niarchos Park knits the surrounding neighborhoods back together, reflecting their street grid in its design. The Park gently grades to a 32 m (105 ft.)-high hill leading to the summit where a glass structure, the Lighthouse/Reading Room, facilitates the visual connection between sea and city, past, present and future.

Renowned architect Renzo Piano has designed an icon that represents the aspirations of Greeks in the third millennium by incorporating essential elements of the national ecology – the sea, sun, stone, and earth. A beacon of sustainability is borne out in every aspect of the design—from the Park, which also functions as a green roof for the National Library and Greek National Opera, to the canal which can also function as an additional anti-flooding measure to the whole site, to the photovoltaic canopy which produces energy for the two buildings’ needs and contributes to the goal of low emissions.

The approximately €566 million (US\$803 million) project is a culmination of the Stavros Niarchos Foundation’s commitment to the culture, prosperity, and future of Greece. This is the first public-private partnership of its kind in Greece, and the largest cultural/educational project ever undertaken in the country. When completed, it will be fully operated and controlled by the Greek State. As one of the largest construction projects in recent Greek



top: Opera, Agora and Library, South East elevation
bottom: The Hill formation, concept model



top: The site
bottom: Bird's-eye view of model

history, the Center will have an immediate impact on the local economy, providing jobs and infusing capital into a challenging economic climate.

Intrinsically designed to draw visitors, the SNFCC extols the public benefit of community and of urban civic spaces. Tree-lined side streets entice visitors into the Park. Once visitors are inside the Park, a host of spectacles and access to arts and educational programs entices them to explore, discover and learn.

Underneath the Park, two buildings have been brilliantly combined into one fluid, glass-walled structure, sculpted to include an urban Agora – both a gathering place and a portal to the National Library and Greek National Opera. An iconographic tower of books, a functional and welcoming symbol of accessible learning, defines the character of the new National Library of Greece, which will offer a plethora of public services and will include a lending library, while serving as a center of research and scholarship. The Greek National Opera will offer technological sophistication and acoustic perfection that will accommodate the most demanding productions including ballets, concerts, musicals, and more intimate solo performances.

A world-class cultural resource, a gift to a community, a beacon of sustainability, a tribute to a legacy, a symbol of the future...

WELCOME TO THE STAVROS NIARCHOS FOUNDATION CULTURAL CENTER.

THE STAVROS NIARCHOS PARK

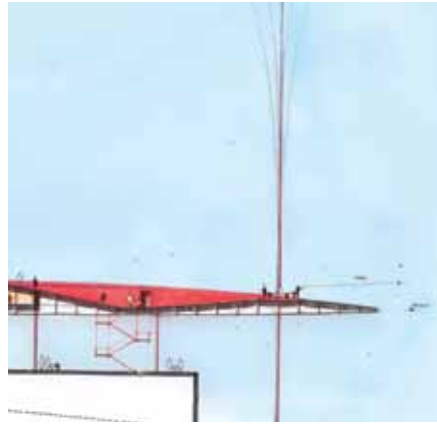
A lifeline for the SNFCC and surrounding community, the Stavros Niarchos Park epitomizes the core values of the Center: sustainability, access to the arts and education, and enjoyment. One of the largest green spaces in Athens—welcome news to a city with the lowest per capita green space in Europe—the Park covers 85 percent of the SNFCC site.

As visitors approach the SNFCC site from the North, the urban landscape begins to give way to tree-lined side streets leading patrons to their destination. Once there, guests will be able to rest in meditative seating areas or explore a circular labyrinth. Children will play in playgrounds, especially designed to spark their creativity and imagination. For active patrons, the adjoining Esplanade, which readily accommodates wheelchairs and strollers, is suitable for running, biking, and roller-blading.

Allées leading further into the Park, lined with tall pine and olive trees interspersed with smaller ones, create contrast between closed and open space, light and dark, color and texture. Located in the center of the Park, the Great Lawn, an



The Stavros Niarchos Park



top: Aerial view from the north boundary
bottom: The Energy Canopy, concept sketch

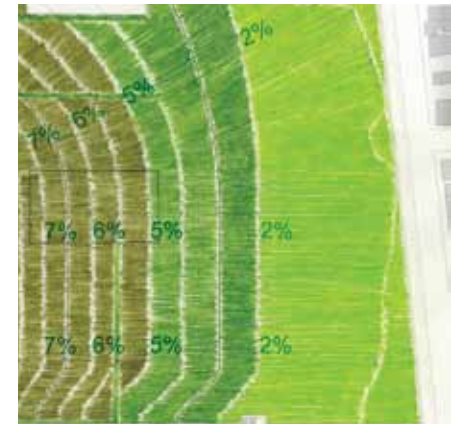
open space for large gatherings, offers a venue for concerts, festivals, and films. True to the Center's accessibility principle, the Great Lawn will facilitate selected programming and performances from the National Library of Greece and the Greek National Opera for Park patrons to enjoy and appreciate.

Greece's strong horticultural tradition is celebrated in the open, sunlit **Mediterranean Garden**. The plant palette alone will make the garden a destination: the textures of evergreen plants such as boxwood, coronilla, cistus, and lentisc; the perfumes of salvia, oregano, thyme, lavender, and rosemary; the touch of rose petals and euphorbias dianthus. School groups will be invited to learn about native species and the threatened Mediterranean habitat. Each month will bring a new color, and each season will introduce a different combination of flowers or foliage.

Linked by an ecological concept and physical topography to the National Library and Greek National Opera, the Park gently slopes over the structures providing a green roof. Soaring above the summit and extending outward from its perimeter is a floating wing – in reality a 100 m x 100 m **Photovoltaic Energy Canopy** that provides power for the facility. An engineering and construction wonder, supported by 40 sinewy metal pillars, the canopy will make a fascinating addition to the city skyline. Coupled with other environmentally innovative designs and practices, the project aims to earn Platinum or Gold Leadership in Energy and Environmental Design

(LEED)* certification, the first such designation in Greece and the first for a project of this scale in Europe.

A RESPITE FROM THE URBAN CONCRETE, THE PARK IS AN OASIS THAT SERVES AS A SOURCE OF DAILY INSPIRATION AND DISCOVERY FOR VISITORS OF ALL AGES.



*LEED is a green building certification system developed by the U.S. Green Building Council (USGBC) that provides independent verification that a building was designed and built using environmentally friendly strategies aimed at improving energy savings, water efficiency, CO2 emissions reduction, improved indoor environmental quality, and stewardship of resources and sensitivity to their impacts. There are four levels of certification; Platinum/Gold are the highest ratings awarded.

top left & right: Partial grading plan of the park
bottom left: Myrtus communis
bottom right: Rosemary



top left: *Cercis siliquastrum*
top right: *Artemisia*
bottom left & right: Olive trees, rosemary and lavender

top left: Pine trees, Barcelona
top right: Ninfa garden, Italy
bottom left: *Atriplex* and *Boxwood*
bottom right: The Barcelona Botanical Garden

THE
NEXUS OF
PARK
LIBRARY
AND
OPERA
HOUSE

AN ESSENTIAL LINK BETWEEN THE NATIONAL LIBRARY OF GREECE AND THE GREEK NATIONAL OPERA IS THE AGORA, AN OUTDOOR PUBLIC MEETING SPACE DESIGNED TO HOST A VARIETY OF EDUCATIONAL AND CULTURAL ACTIVITIES AND EVENTS, CARVED INTO THE "CLIFF" OF THE STRUCTURE, AND THE ENTRANCE PORTAL FOR THE NATIONAL LIBRARY AND OPERA LOBBIES.



top: The Agora and the Lighthouse/Reading room or upper Agora
bottom: "The continuous balcony system", concept model.

True to its origins and directly across from the Agora, wide marble steps offer a space for impromptu performance, as well as people-watching. A system of balconies, resembling straight red lines, is the unifying element of the three spaces, the Opera, the Agora, and the Library. Located in the lobby of the Opera the balconies are used to connect the different tiers, while in the Library they are used to connect the different mezzanines of the building's bookshelves system. In both cases, the balconies are visible through the towering glass facades. As they emerge from inside the lobbies of the Opera and the Library, the balconies continue externally on the west façade of the Agora, highlighting its depth.

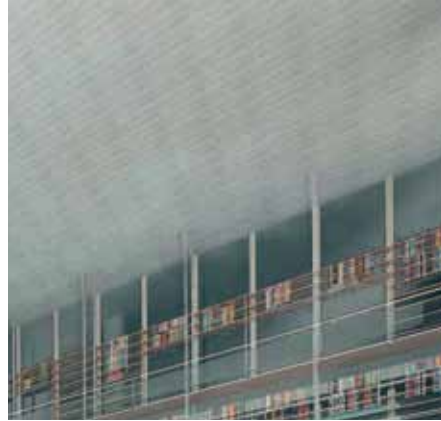


View of National Library from the Agora

The concept of the **Agora** has a vertical counterpart in the SNFCC, the **Upper Agora**. At the Park's summit, patrons will encounter a 900 m² glass-walled multi-functional space, the **Lighthouse/Reading Room**. Visitors near and far will visit the Park summit for its incredible vistas of the nearby sea and visual link to the city. The Lighthouse/Reading Room will provide not only a space for people to appreciate the views but a quiet area to read, reflect or meet in small groups for seminars, and to take part in various cultural and educational events.

The architectural concept of *topos* and design principle of transparency can be best appreciated from the vantage point of the Esplanade. Visitors can view the entire width of the glass façade fronting the National Library and the Greek National Opera, which have been combined into a single inspired structure. The glass façade angles in declension from left to right, following the contour of the green roof.

Alongside is a wide **Canal**, a figurative extension of the adjacent sea, which will also provide anti-flooding support. From the outside, as a visitor stands by the Canal, the separate identities of the National Library and Greek National Opera are readily apparent from the distinct design of their interior lobbies: the book tower of the Library and the concrete “quarry” of the Opera.



top: Library Atrium
right: Library, Atrium, working model

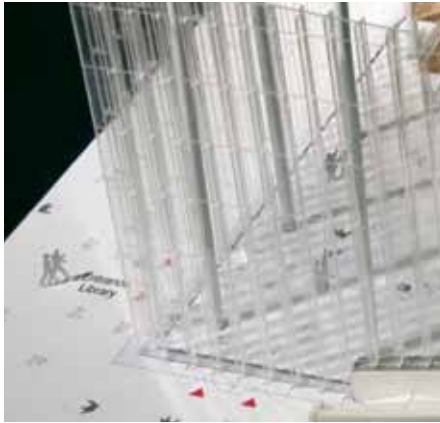
THE NATIONAL LIBRARY OF GREECE

The new building for the National Library of Greece (www.nlg.gr) will modernize an institution founded in 1832. An iconographic tower of books, three stories tall and visible from a distance, is a discernible indication that the Library has expanded its focus from an exclusive research facility to an all-inclusive public resource. In its new and expanded role, the Library will support patrons of all ages and education—from academic researchers of classical manuscripts, important documents, and archival material to children and young adults destined to become the next generation of users.

From the Agora, the entrance leads into a large open lobby that provides an immediate visual orientation to all the Library's functions. The lending library, bolstered by a significant book collection and other media, will include separate areas for adults, teenagers, and children and will offer a wide range of educational and cultural programs. The natural light available throughout the National Library will help create an open, hospitable environment for individual and collaborative learning. Events and seminars will be hosted



*top: View of the Esplanade from the Library Atrium
bottom: Central Reading Room*



Library , Atrium, working model

for both children and adults, and classes will incorporate natural learning opportunities originating from the Stavros Niarchos Park as well.

The nearly 22,000 m² (236,800 sq ft) state-of-the-art building combines tradition with technological innovation, conservation with information and communication. The flexibility of its design, informed by consultations with the prominent British Library (www.bl.uk), ensures that the NLG can respond effectively to ever-changing needs and the challenges of the digital age. As part of a digital strategy, the NLG is currently in the process of developing a plan for a nationwide digitization project, which will help make heritage materials available to the public and will offer access to the Library's various collections. Connectivity with other libraries globally will allow the Library's users access to material abroad that is relevant to Greece or Hellenism. In addition, a **Business Center** will provide entrepreneurs and the public with an active hub for enterprise, knowledge, and innovation, offering computer workstations, laptops, and wireless connectivity.

A modern academic research facility found within the NLG will be a model for other institutions. The new building will enable all existing research collections, currently located in three separate buildings, to be housed in a centralized location, with optimized access to collections for researchers and scholars. Holdings include over 4,500 codices from the 9th to the 19th centuries and a rich variety of important historical documents and archives.



Modernized climate control and preservation and digitization facilities will ensure that the library's significant rare manuscript collection is available for future generations of scholars. **THE NATIONAL LIBRARY OF GREECE HAS AN EXCITING NEW MISSION TO BECOME AN IMPORTANT VENUE FOR EXHIBITIONS OF ITS HOLDINGS. SELECTIONS OF THE NATIONAL LIBRARY'S MANUSCRIPTS WILL BE EXHIBITED ON A ROTATIONAL BASIS, AFFORDING THE PUBLIC THE OPPORTUNITY TO VIEW GREECE'S TREASURES AND CULTURAL HERITAGE.**

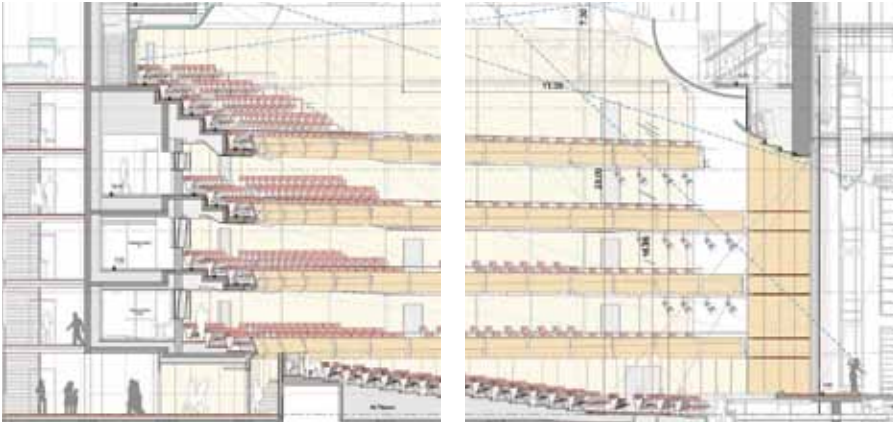


*top: Library section across the Atrium
bottom: Atrium bookshelf system*

THE GREEK NATIONAL OPERA

In its new home, The Greek National Opera (www.nationalopera.gr), which was founded in 1940, will be an exciting destination for music lovers and architecture cognoscenti alike. **THE BUILDING WILL BE A MULTI-USE VENUE CAPABLE OF HOSTING A VARIETY OF PERFORMANCES AND EVENTS. ITS STAGES WILL ACCOMMODATE OPERA PRODUCTIONS, BALLET, CHILDREN OPERA PERFORMANCES, MUSICALS, CONCERTS, THEATER PERFORMANCES, AND MULTIMEDIA ART PROGRAMS.**

Concrete walls towering six stories high dominate the lobby, create the feeling of being inside a “quarry”, and define the dramatic purpose of the stages within. The main block of the opera house is surrounded by several suspended light balconies, with openings leading inside the auditorium to all the different loge areas at every level, providing patrons an opportunity to appreciate the impressive backdrop close-up.



top: Opera Main Hall Section
bottom: Main Auditorium

The heightened expectations raised by the Opera lobby are surpassed by the interior performance space. The new 28,000 m² (301,000 sq ft) auditorium is an architectural jewel, designed to enhance the opera experience for patron and artist alike. Its world-class acoustics, mechanical capabilities, flexible staging, and innate beauty will position it for immediate entry into the world opera circuit, ready to play host to the most technically demanding operas, international multimedia art productions, and accomplished solo vocalists. The auditorium is on par with the best European opera houses and its multiple stages configuration allows for efficient scene changes and the staging of complicated productions. The comfort and technical capabilities of the 1,400-seat main auditorium will be equaled in the backstage dressing rooms and rehearsal spaces, coaching rooms and costume shops.

The new opera house presents the Greek National Opera with opportunities to strengthen its educational and outreach programs through lectures, seminars, and other events. **Children's Stage**, designed to attract younger audiences and engage future generations of opera-goers, has expanded its children's programming to include children's performances, educational programs, age-specific seminars, and innovative activities. The GNO will be able to take advantage of new technologies to present productions via the Internet to other Greek cities, as well as employ the Stavros Niarchos Park as an outdoor theater for selected video-link live performances.



top: Opera Main Hall Section
bottom: Opera Main Hall Section, detail



top: Opera Main Hall
bottom: Experimental theater, general view

A **smaller experimental (black box) theater** with a capacity of 400 people will host more intimate productions, including Experimental Theater performances, contemporary Greek music, dance, dramatic readings, and theater productions in a venue with state-of-the-art technical capabilities. The small theater has a flexible layout with no fixed seating, making it ideal for experimental productions. A school of dance will also reside at the SNFCC.

In addition to sharing exhibition space and conference rooms, a **café, bookstore** and space for public cultural programs will connect the educational and cultural missions of the National Library of Greece and the Greek National Opera. Synergies among the cultural activities of both institutions are central to the vision of the project.



top left: Main Hall
bottom left: The light sculpture suspended from the Main Hall's ceiling
top and bottom right: Opera Lobby

BACKGROUND

THE STAVROS NIARCHOS FOUNDATION (WWW.SNF.ORG) IS ONE OF THE WORLD'S LEADING INTERNATIONAL PHILANTHROPIC ORGANIZATIONS, MAKING GRANTS IN THE AREAS OF ARTS AND CULTURE, EDUCATION, HEALTH AND MEDICINE, AND SOCIAL WELFARE.

While prominent in its support of Greek-related initiatives, the Foundation's activities are worldwide in scope. To date, the Foundation has provided total grant commitments of €914 million/US \$1.3 billion through more than 2,000 grants to nonprofit organizations in 95 nations around the world.

Having started its grant-making activities following Stavros Niarchos' death in 1996, the Foundation adheres in its mission to his global legacy, Greek heritage, and interest in providing underserved populations with access to opportunity. With offices in New York City, Athens, and Monte Carlo, the Foundation funds institutions and projects that exhibit strong leadership and sound management and that have the potential to achieve a broad and lasting impact.

In Greece, the Foundation's assistance has funded numerous children's education opportunities, Special Olympics programs, day care facilities, library restorations, university facilities, elder care services, musical performances, hospital facilities and ecosystem restoration, among other projects.



top left: Veria Central Public Library

bottom left: University of Athens, the Department of Archaeology and History of Art

top right: Theater of Ancient Messinia

bottom right: The ICU of the Athens General Children's Hospital "Pan. & Aglaia Kyriakou"

The SNF announces its intention to fund the development of the Stavros Niarchos Foundation Cultural Center

10/06

Signing of Memorandum of Understanding with the Greek State

6/07

Commencement of Field Studies Master Plan

7/07

Renzo Piano Building Workshop (RPBW) selected to design the SNFCC

2/08

Commencement of Feasibility Studies

4/08

Meeting of the SNF Board of Directors and RPBW's design team with the Prime Minister

7/08

Commencement of Schematics

10/08

Renzo Piano presents the SNFCC's Concept Design to the Prime Minister and the Greek public

1/09

Signing of contract with the Greek State

3/09

Ratification of contract by the Greek Parliament

7/09

Presentation of the final architectural study and related technical studies to the public

6/11

Commencement of construction

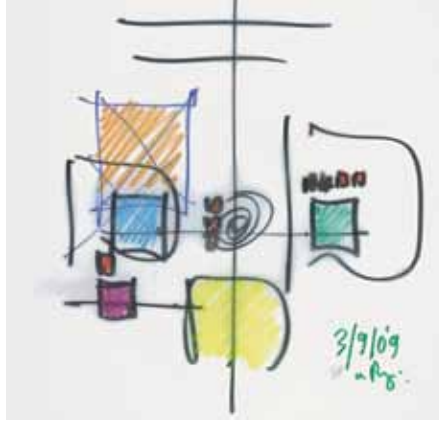
2011

Completion of construction and passing of responsibility for administration of the SNFCC to the Greek State

2015



Aerial view of the site



Renzo Piano's sketch of the project



Bird's-eye view of model



View from the Canal

A WORLD-RENOWNED ARCHITECT WITH MEDITERRANEAN ROOTS

The Foundation was ready to enlist a creative force, an architect who possessed vision, intellectual curiosity, and elegance, a person of professional distinction committed to the excellence of every aspect of the Stavros Niarchos Foundation Cultural Center — and who had a demonstrated respect for the history and culture of Greece. In early February 2008, the Board announced its unanimous choice: The Renzo Piano Building Workshop. Born in Genoa, Italy, Mr. Piano achieved international fame in the 1970s with the Centre Georges Pompidou in Paris and has remained at the forefront of architectural design ever since. In 1998, he was selected for his profession’s highest honor, the Pritzker Architecture Prize. When interviewed with respect to the SNFCC project, he paraphrased the pledge of the Athenian hoplites in antiquity and said that he will “give back a city more beautiful than the one he initially encountered.”



top left: Chicago Art Institute-The Modern Wing, Chicago, USA
top right: Jean-Marie Tjibaou Cultural Center, New Caledonia
bottom left: Zentrum Paul Klee, Bern, Switzerland
bottom right: The New York Times building, New York, USA



AN INTERNATIONAL LANDSCAPE DESIGN FIRM

Mr. Piano is acknowledged for his collaborative design process, and the international landscape design firm **Deborah Nevins Associates** (DNA) is an essential partner in the project. Known for creating sustainable landscape designs that can adapt to evolving needs, the firm believes that a harmonious and accessible design can heighten the spirit of all who experience the land — regardless of their physical capabilities.

*top left: Steps, S. California, USA
top right: Plane trees, S. California, USA
bottom left: Midwest garden, USA
bottom right: Arbutus trees, S. California, USA*

A PRIVATE INITIATIVE FOR THE PUBLIC GOOD

In looking for an appropriate site for the SNFCC, a 240,000 m² (60 acre) tract of land located 4.5 km south of Athens in the seaside municipality of Kallithea was identified. Following consultations with the Ministry of Environment and Public Works and the mayor of Kallithea, consensus emerged that the land, used for parking during the 2004 Olympics, held great promise as both a recreational and cultural site. 210,000 m² (50 acres) of the site were earmarked for the Center and Esplanade, with the remaining acreage designated for the Municipal Sport and Leisure Park of the Municipality of Kallithea.

Once preliminary studies assured the Foundation and the Greek State of the project's viability, in June 2007 the two parties signed a Memorandum of Understanding (MOU). In March 2009, the Foundation signed a contract with the Greek State to build the SNFCC, which was ratified by the Greek Parliament in July 2009. The agreement stated in part that the Foundation agreed to assume the total cost of building the SNFCC, estimated to be €566 million (US\$803 million), and upon its completion would "DONATE IT TO THE GREEK STATE FOR USE BY THE GREEK PEOPLE."



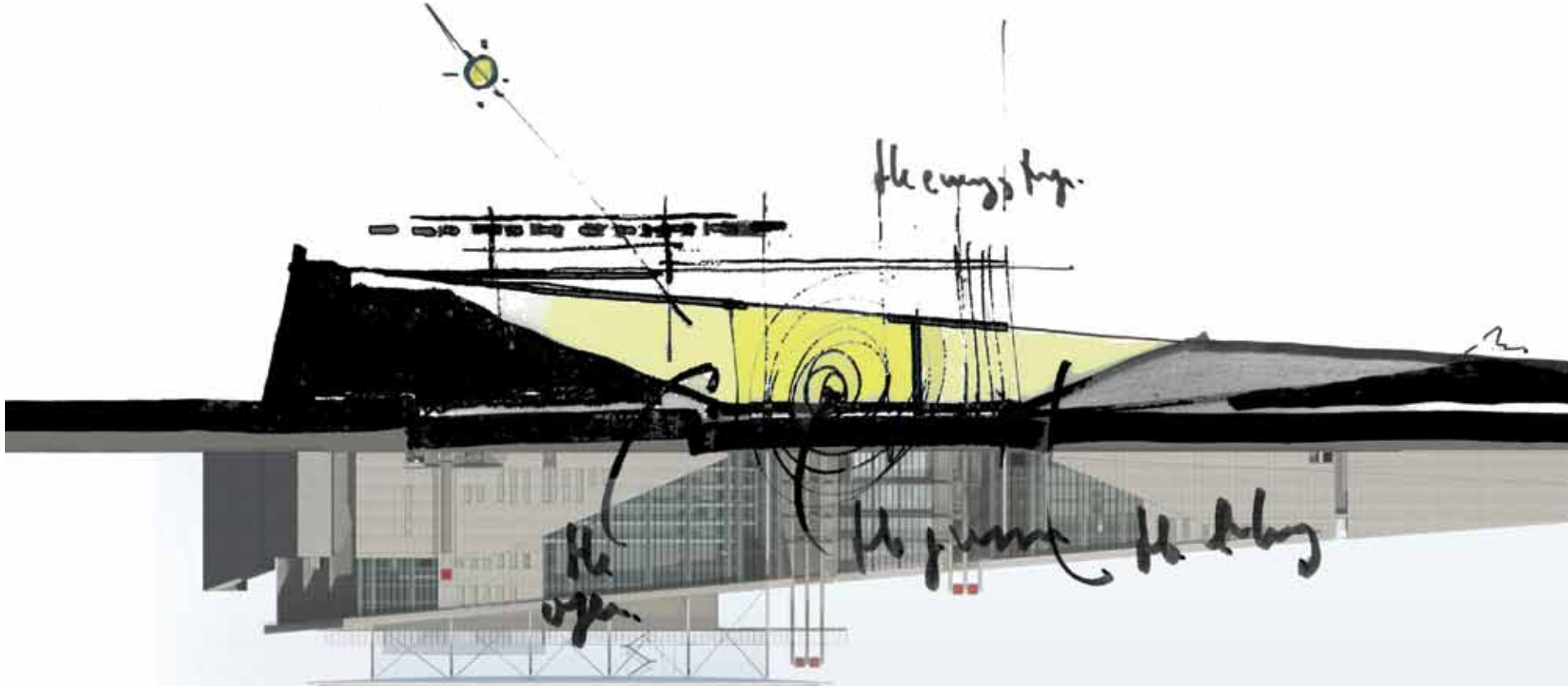
Walking in the park towards the south edge

ECONOMIC IMPACT STUDY SUMMARY

A study was undertaken to assess the economic and social impact of the SNFCC. This study was commissioned by the Foundation but contracted and executed by The Boston Consulting Group (BCG), based on extensive information from a variety of sources, interviews, market data sources and expert views.

The construction and operation of the SNFCC are expected to have positive impact in the form of increased capital investment, consumption spending, job creation, attraction of complementary businesses and other enrichments to the economic, environmental and social fabric of the local communities, Athens, and Greece. Any unique investment of the magnitude proposed brings a whole range of considerable benefits to the region absorbing this investment, as well as to the country. The benefits can be fundamentally summarized as follows:

- Approximately €1 billion of total economic stimulus will be derived from the upfront investment in the construction of the SNFCC, with effects observed in the short- to mid-term horizon.
- The combined effects of operations and visitor spending associated with SNFCC activities will generate approximately €160 million of economic activity throughout the local community, Athens, and Greece in the first full year of operations.
- The green surface per capita will double in the surrounding municipalities.
- Athens will gain a world-class cultural institution – with all of the recognition and international attention that comes with it.
- The SNFCC will be the focal point of redevelopment of a major area of downtown Athens.
- The ongoing operations and programming of the SNFCC will be a perpetual economic and cultural engine for Athens and Greece.
- Special groups of visitors (e.g., people with special needs and senior citizens) will be included in all Stavros Niarchos Park activities, and social barriers for participating in cultural and educational activities will be removed.
- The SNFCC's unique public-private partnership for social infrastructure development can be used as a prototype for similar donations – featuring high transparency, a robust governance structure in place and a ready-to-run organization to be transferred to the State.



environment/culture/education/*it's one destination!*



STAVROS
NIARCHOS
FOUNDATION
CULTURAL
CENTER

ΚΕΝΤΡΟ
ΠΟΛΙΤΙΣΜΟΥ
ΙΔΡΥΜΑ
ΣΤΑΥΡΟΣ
ΝΙΑΡΧΟΣ